



OIL & GAS

# WORLD-CLASS GUYANESE OFFSHORE SUPPLY BASE

**LOCATION:**  
Georgetown, Guyana

**OPERATOR:**  
Guyana Shorebase

**CLIENT:**  
ExxonMobil

**SCOPE:**  
Concept, Feasibility,  
Engineer, Construct



## GUYANA PROJECT OVERVIEW

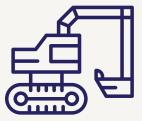
ExxonMobil initiated oil and gas exploration activities in Guyana in 2008, collecting and evaluating substantial 3-D seismic data that led to the company safely drilling its first exploration well in 2015, Liza-1. In 2017, Pacific Rim Constructors were contracted to Design, Engineer, Construct a 150-acre shore base operation for the support of Liza 1 and the FPSO offshore.



**4**  
Berths constructed



**over 300k sqft**  
Total covered warehousing,  
designed, engineered & built



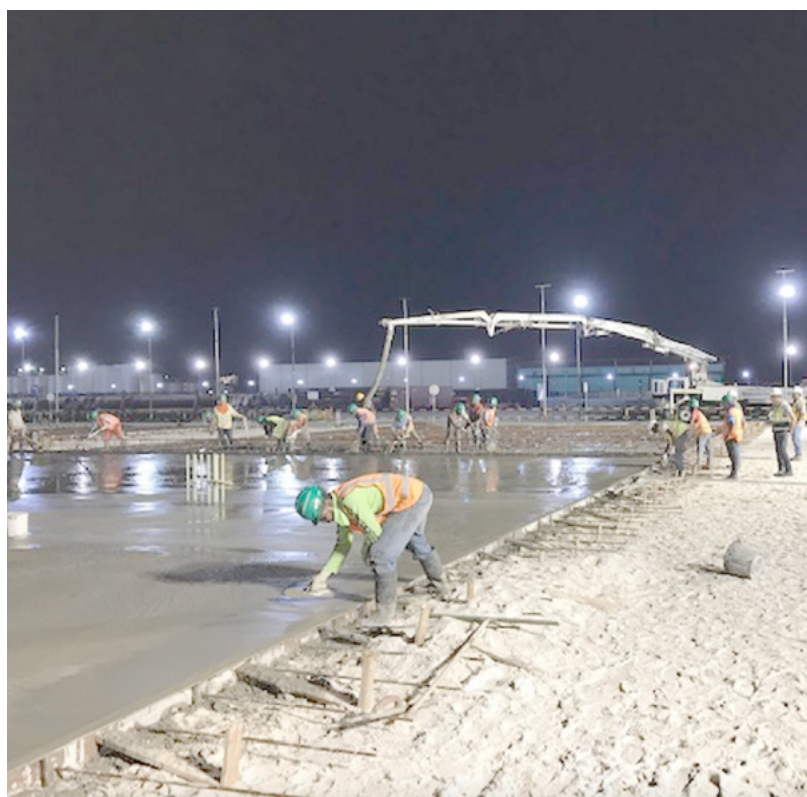
**250k tons**  
Land preparation sand used



**110k tons**  
Gravel used

## ASSETS & PEOPLE

As part of its commitment to empowering local content, Pacific Rim Constructors has trained and employed trusted and certified subcontractors, to support both its large and small scale builds in Guyana. In addition, it has procured a complete compliment of in-country construction equipment to support any project.



## CHALLENGES

As an area that sits below sea level, Georgetown's terrain proves challenging. There is also minimal infrastructure and skilled construction labor in-country to support large-scale development.

## INSIGHTS

Apart from the understanding gained from building during a global pandemic, PRC can add the key insights gained from the berth development project on the Essequibio River, as well as the land development challenges it faced to build in Guyana, to its depth of experience.



146N Canal St, Suite 340,  
Seattle WA, USA



1 (206) 632-7421



sales@pacrimconstructors.com